

EL JADIDA'S SUBMARINE OUTFALL

2.086 m long, Ø 900 mm with
diffuser at -14.00 (CD)



ETERMAR

CLIENT

R.A.D.E.E.J.





El Jadida's Submarine Outfall – Morocco

CONSTRUCTION TIME

24 MONTHS

DESCRIPTION

The outfall is 2.086 m long, for human and industrial treated effluents constructed with pipes HDPE PN100 Ø900 mm, installed in three different phases.

Trench piece:

448 m long pipe installed in trench from 2 to 6 meters deep. The trench is covered with sand (protective layer) and excavation materials. At the end is covered with a concrete slab to avoid wave removal.

Tunnel piece:

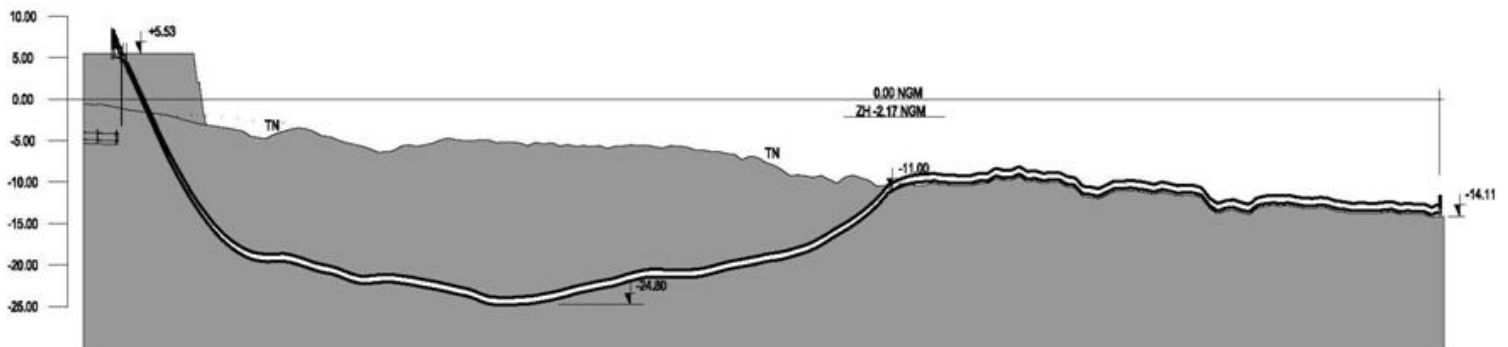
Installation carried out by Horizontal Drive Drilling with 918 m of length in marine rocky bottom starting from the tidal zone.

Submerged piece:

720 m long pipe submerged at depths between -10.20 m and -14.00 m (ZH). This piece is installed on the sea bottom stabilized by its own weight, concrete ballast rings directly installed on the pipe and by the diffuser that is fixed at the rocky bottom.

Diffuser:

The diffuser has four chimneys that proceed to the dispersion of the effluents. Built in steel painted and protected against corrosion with sacrificial anodes.



ETERMAR