

# VIBROLANCE PTC 160 HR2

Mejoramiento de Suelos

eq.nº:034012



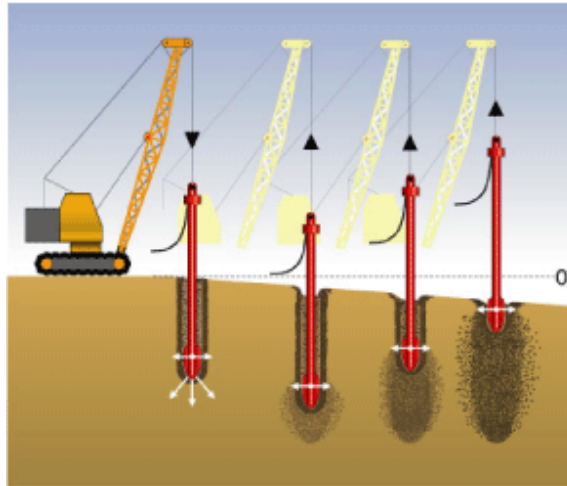
## ETERMAR

### PRINCIPALES CARACTERÍSTICAS

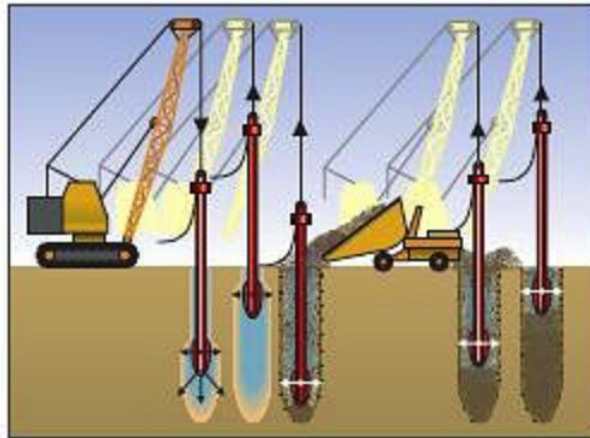
POTENCIA	150 kW
FRECUENCIA	2.400 rpm
FUERZA CENTRIFUGA	116 kN
MOMENTO EXCENTRICO	1,8 m.kg
MOTOR HIDRAULICO	Rexroth - 135 kW
GRUPO ELECTROGENO	Caterpillar V3000 - 224 kW
BOMBAS PRINCIPAL / AUXILIAR	350 bar / Leduc - 320 bar



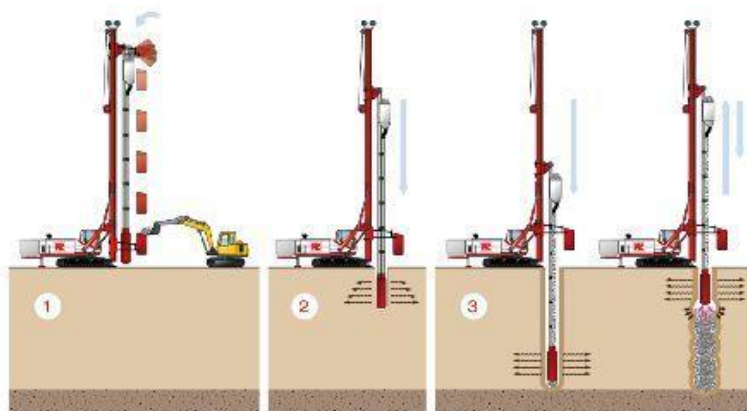
# VIBROLANCE PTC 160 HR2



**Vibrocompactação**



**Vibrosubstituição - Colunas de Brita  
(Top Feed System)**



**Vibrosubstituição - Colunas de Brita  
(Bottom Feed System)**

ETERMAR