

PHILAE/ROCAMAR

Batelão Hydroclap

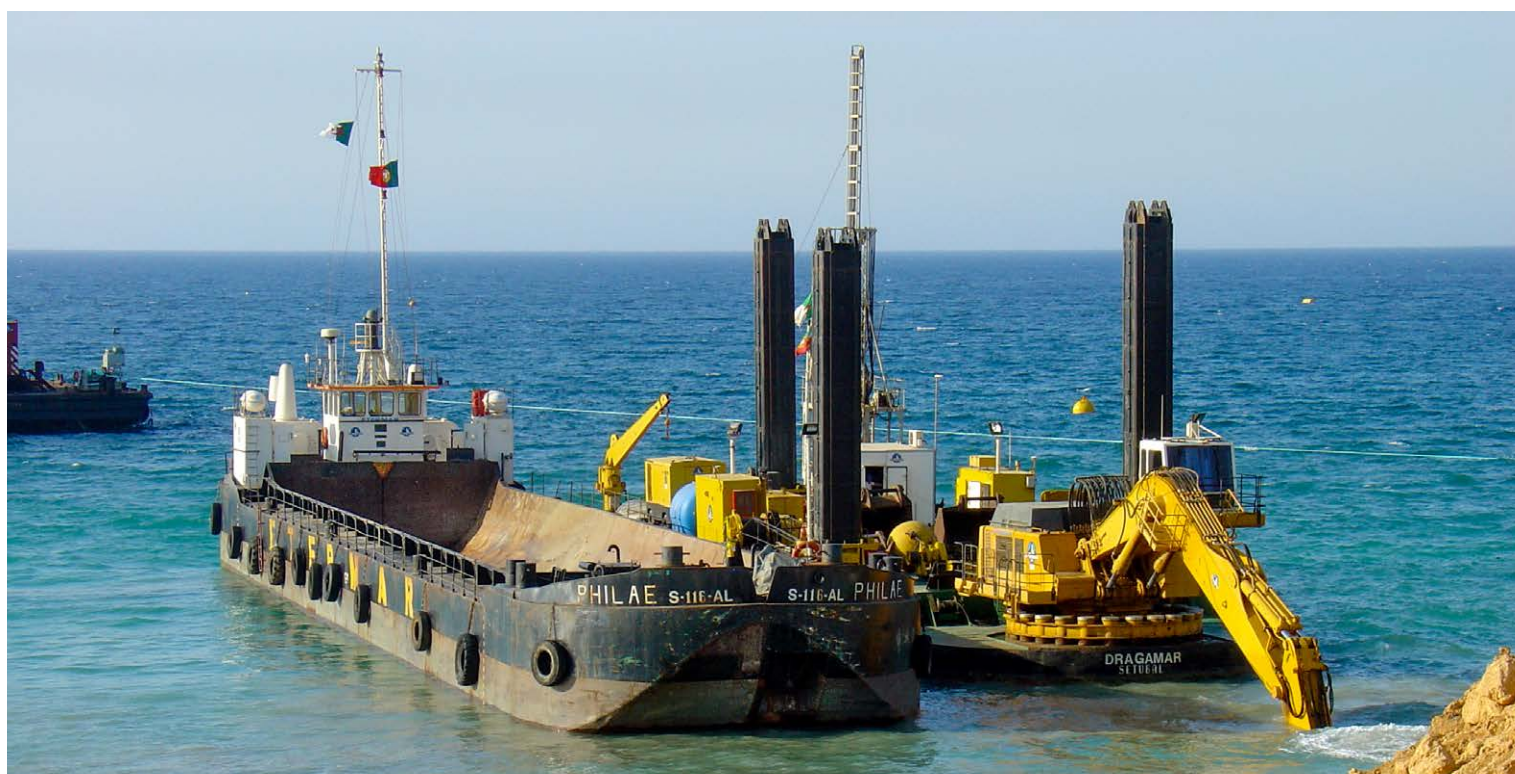
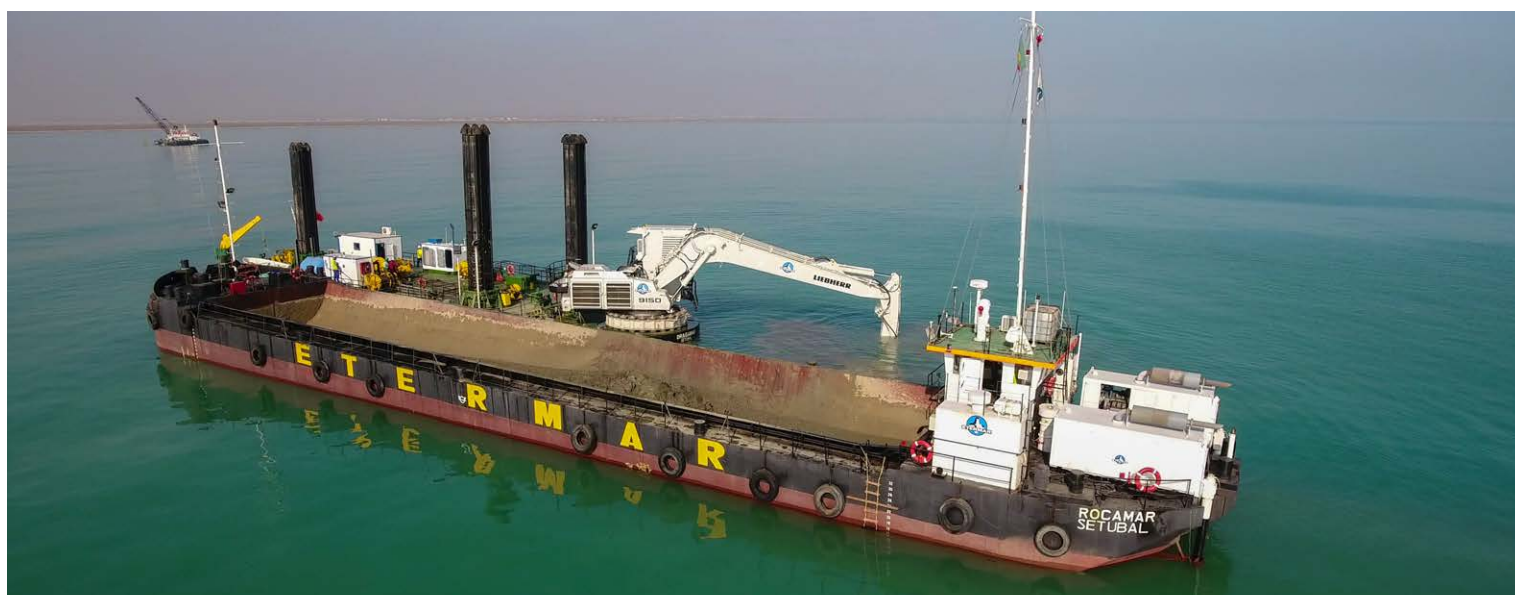
eq.n.º:005028-005032



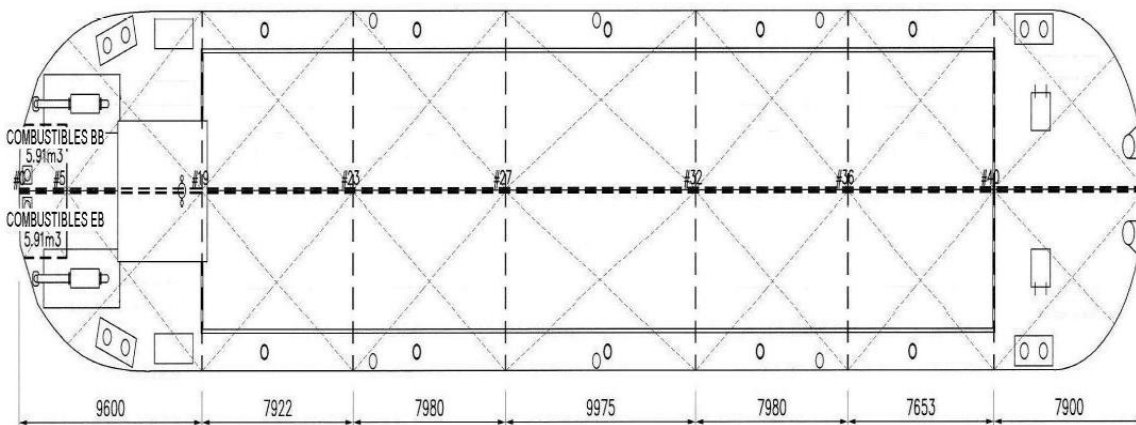
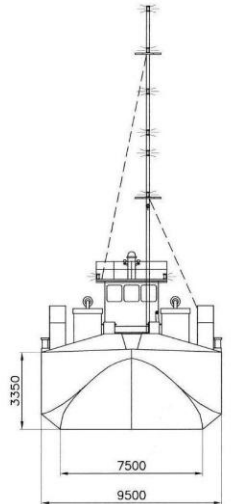
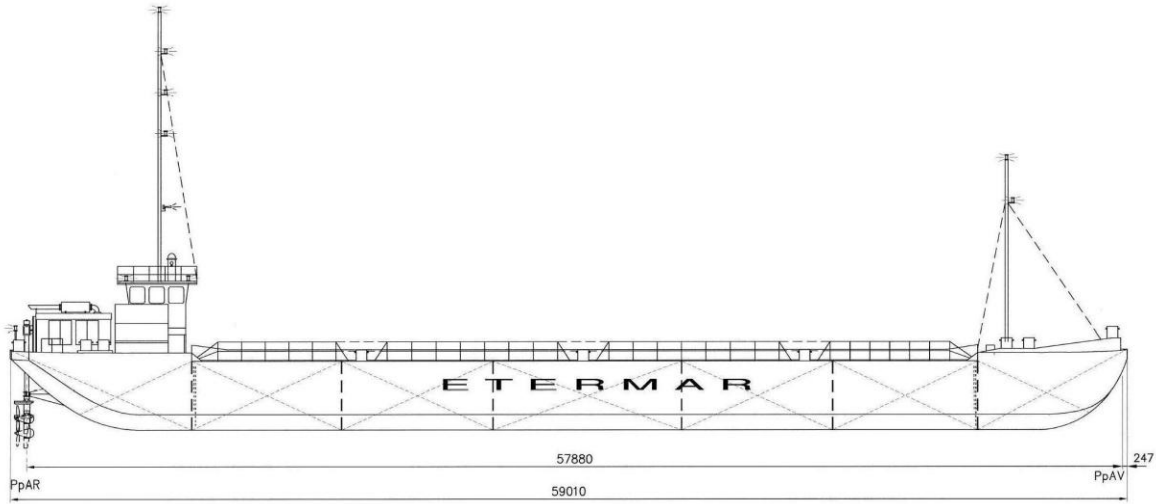
ETERMAR

PRINCIPAIS CARACTERÍSTICAS

COMPRIMENTO TOTAL	59 m
BOCA	9,50 m
PONTAL	3,35 m
ARQUEAÇÃO BRUTA	526 Ton
CAPACIDADE DO PORÃO	660 m ³
POTÊNCIA MOTRIZ	2x260 HP/1800 rpm



PHILAE/ROCAMAR



ETERMAR