

# ATLAS COPCO FLEXIROC T35-11

Perfuradora

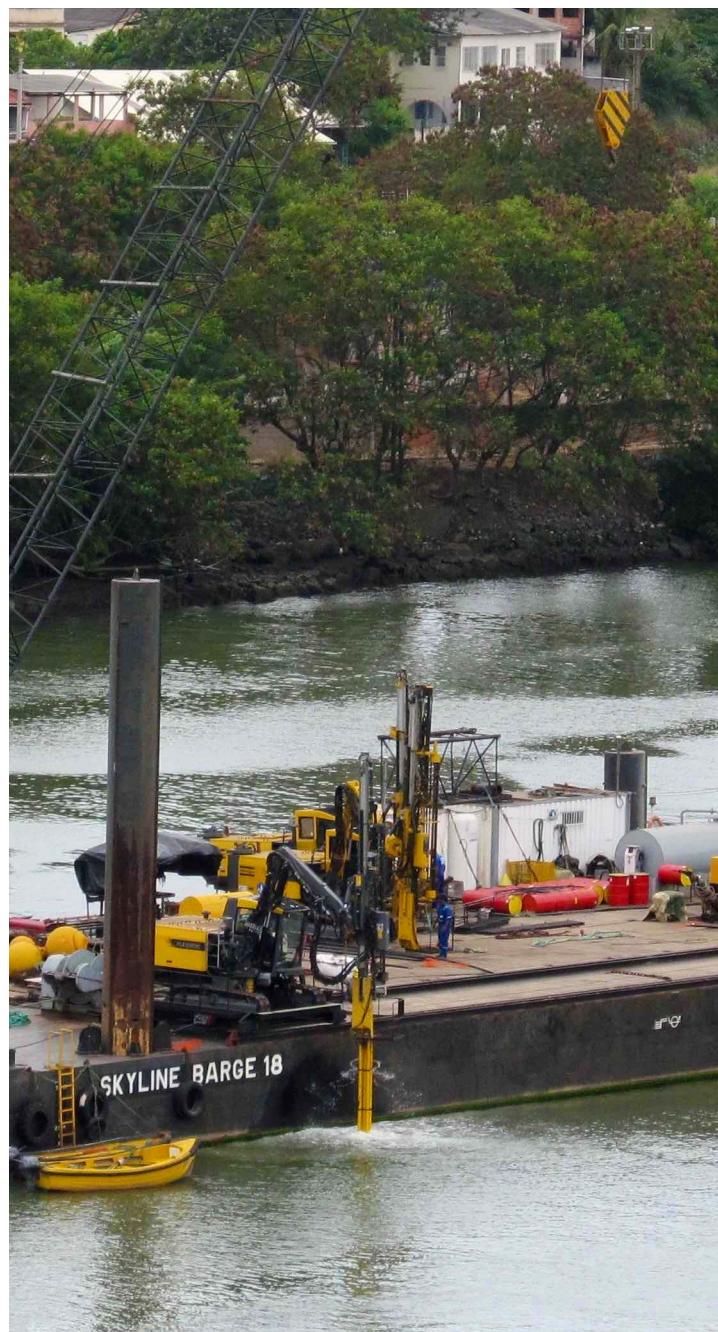
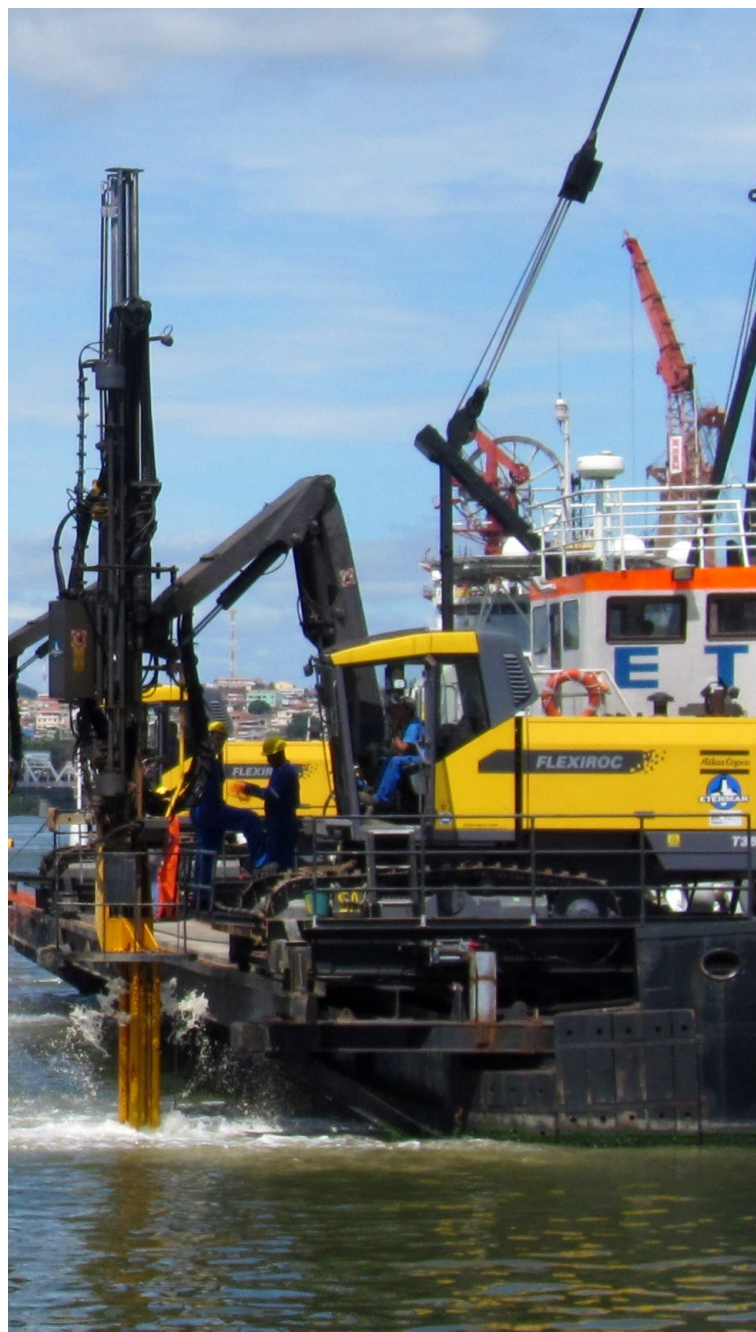
eq.nº: 124010-124011-124012-124013



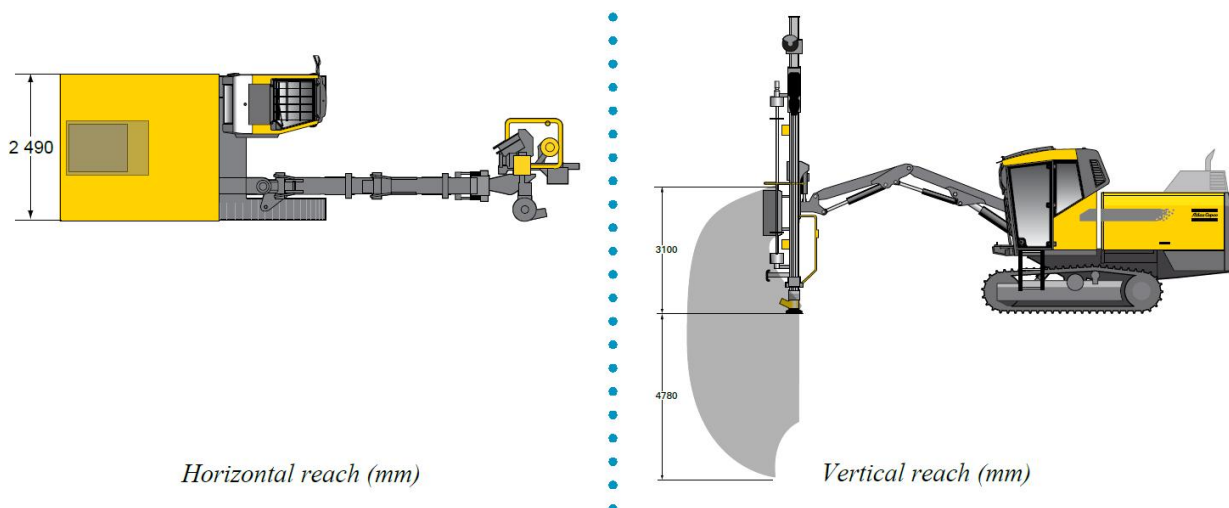
## ETERMAR

### PRINCIPALES CARACTERÍSTICAS

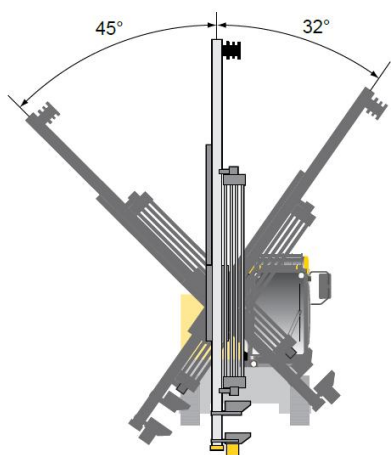
DIÁMETRO DE PERFORACIÓN	T38, T45, T51 - 64-115 mm
PROFUNDIDAD	T38, T45, T51 - 28 / 21 m
TRACCIÓN	115 / 81 kN
DIMENSIONES L/W/H	11,00 / 2,49 / 3,20 m
PESO OPERACIONAL	16.700 Kg
MARTILLO	COP 1840 - 26.8 hp
MOTOR	CAT C7-Tier3 - 225 hp



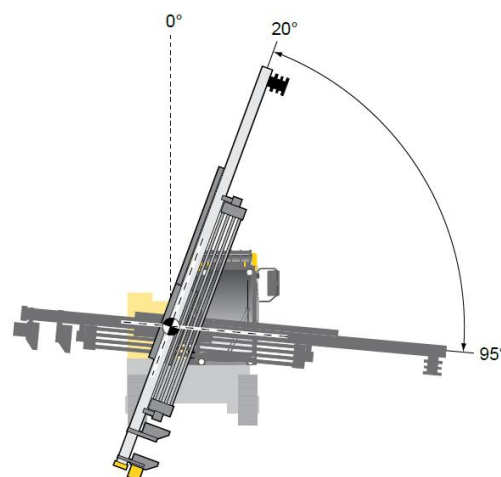
# ATLAS COPCO FLEXIROC T35-11



## Feed swing angles



*Feed without toe-hole kit*



*Feed without toe-hole kit but after reconnection for horizontal feed*

ETERMAR